

# THURMAN

## KITCHEN · BATH · ELECTRICAL · PLUMBING

### 50-GAL RAIN BARREL

- Recycled bulk food container
- Screw top lid included
- Hose bib installed
- 36" high X 22" wide

**\$59** 23450100



### 55-GAL STEEL BARREL

- Painted steel drum with removable lid with locking band
- Recycled food container
- Color and style may vary

**\$49** 23451000



### 275-GAL STORAGE TANK

- Recycled bulk food container
- 8" bung on top with a 2" threaded valve on the bottom
- Length is 48", width is 40" and height is 46"

**\$299** 23452100



### 55-GAL POLY BARREL

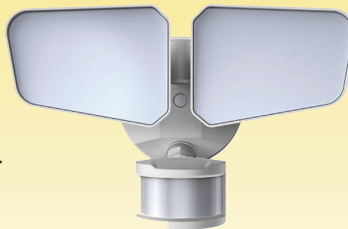
- Recycled bulk food container
- Non-removable lid with 2" bung
- 35" high X 24" wide

**\$59** 23450700



### LED MOTION SECURITY LIGHT

- Uses only 9 watts
- 60-watt incandescent equivalent
- Solid State LED lighting
- Long-life, rated for 15,000 hours



**\$39** CTL 41660100  
41660101

### RENZO PULL-OUT KITCHEN FAUCET

- Pull-out spout
- One handle lever design for ease of use
- Powerful rinse or aerated stream
- 2.2 gpm water flow
- Limited lifetime warranty
- Chrome

**\$139** 20086500

**STARTS NOW!**  
Prices may vary after ...  
**April 30, 2024**



MOEN®

### 5-CUBIC FOOT WHEELBARROW

- Corrosion-proof poly tray
- Strong, seal-coated hardwood handles
- Tubed 14" pneumatic tire



TRUPER

**\$89** 24322000

### ALDER BATHROOM FAUCET

- One handle design for ease of use
- Includes lever AND knob handle (lever shown)
- Chrome



**\$59** 20187100 MOEN®

### YARD HYDRANTS

- Choose bury depth by ditch depth
- Cast-iron head
- Strong, 1" corrosion-resistant stand pipe for long life.

WATER SOURCE™



1' BURY	2' BURY	3' BURY
20206700	20207000	20207300
<b>\$59</b>	<b>\$64</b>	<b>\$69</b>

### APPLEWOOD COOKSTOVE

- The warmth of a wood fire meets the joy of home cooking in the Kuma Applewood. Designed to allow the cooking temperature to be adaptable to the season, this small cook stove is ready-made for daily use



**\$2,999** KUMA 33522000

### HOSE FAUCET

- 1/2" or 3/4" female sillcock
- Flanged base for a secure mount
- Cast brass

ANVIL INTERNATIONAL

**\$6.99** 20245500  
20245600



### 15' GARDEN HOSE

- Solid brass coupling
- Reinforced construction
- 5/8" x 15'

Flexon

**\$12.99** 24519800



### IMPACT SPRINKLER

- 5800 square foot coverage
- Spray range up to 43'
- Adjustable spray pattern

Gilmour

**\$6.99** 23036100



### HOT TUB CHLORINE

- Chlorinating granules
- Clears up hazy water and helps to prevent future algae growth
- Safe for all types of spas and pools
- 2 lbs.

**\$29.99** ClearSpa

20872000



**BATHROOM****PLUMBING****BATHROOM FAUCETS****EURO-STYLE VANITY**

- 24" wide X 16" cabinet depth X 35-1/2" tall
- Fully assembled
- Includes cultured marble top with integrated bowl
- Complete with Brushed Nickel hardware
- Choice of White, Espresso, or Gray

**\$199**31930100  
31930300  
31930500**POINT-OF-USE WATER HEATER**

- Typically used under remote sinks
- 2.5 Gallon, 7-GPH recovery
- 1440 watt element
- 120 volt, plugs into standard outlet
- 11-3/4"Hx10-3/8"W

**\$229**

20400200

Reliance

**ARLYS**

- Installs on countertop or sink
- Optional deckplate included
- **NEW Matte Black finish**

**MOEN****\$149**

20190000

**ARCHER BATHROOM SINK**

- 4" or 8" center faucet holes
- Classic rectangular basin
- 22-5/8" X 19-7/16"
- Overflow drain
- White

**\$189**

21135300

**KOHLER****SILICONE MAX SEALANT**

- Premium all purpose 100% silicone
- Provides maximum flexibility and adhesion
- Withstands extreme expansion and contraction
- Choose clear or white

**\$12.99**20317600  
20317800**LINDOR**

- Elegantly simple, with graceful curves and contours
- Two-handle lever handle makes it easy to adjust the water
- 4" centerset design allows for easy installation
- Spot resistant Brush Nickel finish

**\$99**

20190400

**MOEN****BATHROOM SINK**

- 20"x17" oval, or 19" round
- Self-rimming with concealed overflow drain
- 4"CC faucet holes
- White

**\$59**21130900  
21131500**CAITLIN****DRAIN CLEANING DRUM AUGER**

- 1/4" x 25' auger
- High impact polymer housing
- Easy handling
- Great for clearing stubborn clogs

**\$29**

21334125

**COBRA****TREND**

- Sleek transitional design with its high arc spout
- High-efficiency hidden aerator
- Chrome

**\$79**

20110000

**HUNTINGTON BRASS****KINGSTON TOILET PACKAGE**

- Two piece design
- Comfort height elongated toilet bowl
- High efficiency 1.28 gallons per flush
- Seat, wax ring & bolts included
- White

**\$299**

20981000

**KOHLER****BEHIVE MAX TOILET PLUNGER**

- The first plunger designed to fit both old and new high efficiency toilets (HET)
- Toilet bowl drains have changed from round to oblong shaped outlets and standard plungers on the market cannot achieve an effective seal

**\$14.99**

21334022

**KORKY****HB PRO**

- Two handle bathroom sink faucet
- Includes pop-up drain
- Chrome

**\$39**

20103000

**HUNTINGTON BRASS****RIGHT-HEIGHT TOILET PACKAGE**

- 16-1/2" high elongated bowl
- Seat, wax ring & bolts included
- White

**\$199**

20983300

**American Standard**  
Style That Works Better**UTILITY SINK**

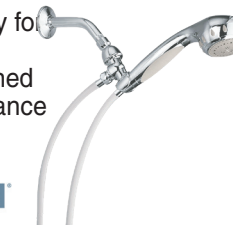
- Free standing utility sink for laundry room, garage, shop
- Large 20-gallon capacity
- 4"cc faucet holes for standard utility faucet (sold separately)
- Molded in drain assembly

**\$59**

23800200

**ELM MUSTEE****BANBURY HAND SHOWER PACKAGE**

- 5-function combination spray for more variety
- Self-cleaning nozzles designed for years of optimal performance
- Chrome

**\$39**

20197102

**MOEN****JERRITT TOILET PACKAGE**

- Round front, 15" high bowl with sanitation bar
- 2" trapway, 8"x9" water area
- Seat, wax ring & hold-down bolts included

**\$129**

20981500

**SUCTION MOUNT GRAB BAR**

- Suction cup mount installs on any flat surface
- White

**Safe-er-Grip****\$18.88**

21280300

**ALDER TUB/SHOWER FAUCET**

- PosiTemp® pressure-balancing valve maintains water pressure and controls temperature
- Chrome

**\$119**

20184706

**MOEN**



## KITCHEN

### MONTVALE KITCHEN SINK PACKAGE

- 33"x22" 9" deep LH bowl, 7-1/2" deep RH bowl
- Offset double bowl sink
- 18 gauge stainless steel
- Pull down stainless steel faucet
- Includes soap dispenser and drains



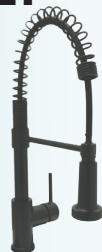
**\$249**

22482000

American Standard  
Style That Works Better

### REXFORD PRE-RINSE FAUCET

- Add the functionality of a commercial faucet with a modern style
- Designed with the home in mind and sized appropriately
- Spring action spray head gives flexibility and efficiency
- **NEW Matte Black finish**



**\$199**

20001503

HUNTINGTON  
BRASS

### ALDER KITCHEN FAUCET

- With its smooth curves and minimalistic design, the Adler™ seamlessly blends with a variety of kitchen décor preferences.
- Chrome



**\$59**

20084100

MOEN

### TREND KITCHEN FAUCET

- 8" Kitchen Faucet
- 360° Swing angle spout
- Chrome finish



**\$69**

20002100

HUNTINGTON  
BRASS

### HOT WATER DISPENSER

- 60 cups of near boiling water per hour
- Easy-to-adjust temperature control
- 115 volts, 750 watts, 6.25 amps



**\$199**

33024300

steamin'  
hot

### GARBAGE DISPOSER

- 1/3 Horse power
- Galvanized steel shredder ring and grinding elements
- 1 year warranty



**\$79**

33020100

evergrind

## CABINETS



**SAVE  
20% OFF**

ORDERS MUST BE PLACED  
BY APRIL 24, 2024

- Save up to 20% off regular price Schrock Trademark series cabinets
- Choose from 6 wood types, 15 stain finishes, and 12 painted finishes
- 1/2" plywood box with fully finished interiors
- 3/4" solid hardwood dovetail drawer boxes



## COUNTERTOPS



### CUSTOM COUNTERTOPS IN QUARTZ, GRANITE & OTHER NATURAL STONES

- Custom made tops to fit your kitchen and bathroom
- Choose from quartz, granite, and other natural stones
- Installation included

MSI ARIZONA  
TILE

pentalquartz®

LG Hausys  
Viatera®  
Quartz Surfaces



**POLY WATER PIPE**



Interstate

- Polyethylene water pipe
- NSF listed for potable water
- Available in 100' or 300' rolls
- Uses insert fittings with clamps
- Price shown is per foot in full rolls

	160 PSI	200 PSI	250 PSI
3/4"	47¢	62¢	74¢
1"	77¢	\$1.01	\$1.20
1-1/4"	\$1.33	\$1.74	\$2.07

**PVC WATER PIPE**

- PVC water pipe
- NSF listed for potable water
- Available in 20' lengths
- Uses glued fittings
- Prices shown are per foot in full lengths

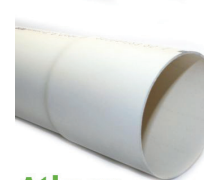


Atkore

	SCH 40
1/2"	57¢
3/4"	71¢
1"	\$1.08
1-1/4"	\$1.43
1-1/2"	\$1.67
2"	\$2.25

**SEWER & DRAIN PIPE**

- PVC drain pipe for curtain drains and septic drain fields
- D2729 is a lighter weight pipe for drainfields and drain lines. 3" & 4" in solid or perforated, 6" in solid only
- D3034 is a heavier weight pipe in solid only
- Uses glued fittings
- Prices shown is per foot in 10' lengths



Atkore

	D2729	D3034
3"	\$2.40	
4"	\$2.39	\$3.74
6"	\$4.73	\$8.65

**FLEXIBLE DRAIN PIPE**

- Corrugated flexible single wall drain pipe
- Used for curtain and general drains
- Available in 10' lengths or 100' coils
- Solid or slotted perforations
- Filtered pipe is available in 100' rolls only



ADS

	PER FT.
3"	\$1.06
4"	\$1.33
4" FILTERED	\$1.68
6"	\$3.01

**PUMPS**

**CONVERTIBLE WELL PUMP**

- 1/2 HP 4.5 GPM
- Convertible deep/shallow well
- Dual voltage- 115 or 230 volt
- 1-1/4" suction, 1" discharge



\$289

23745000



**SUBMERSIBLE UTILITY PUMP**

- 1/6 HP - 1680 GPH
- Will drain from flat surfaces to 3/8"



\$89

23740000



**TRANSFER PUMP**

- 1/12 HP - 360 GPH
- Will drain water from flat surfaces up to 1/8"
- 6' garden Hose, 6' Electric Motor Cord and Impeller Replacement Kit
- Light weight utility pump
- 115 volt



\$89

23740600



**SEPTIC**

**SEPTIC TANK RISERS**

- Mounts on top of septic tanks to provide access for inspection and pumping
- Stackable to reach required height
- May be used on all types of tanks
- Lids are gasketed for proper seal



12"x6" RISER	24"x6" RISER	12" DOMED LID	24" TANK ADPT
23950910	23951001	23951100	23951010
\$19.99	\$29.99	\$19.99	\$24.99
12"x12" RISER	24"x12" RISER	24" DOMED LID	24" ADPT RING
23951000	23951003	23951005	23951006
\$35.99	\$54.99	\$29.99	\$19.99

**DRAINAGE**

**CULVERT PIPE**

- In 20' lengths
- Double wall, solid only
- Prices shown is per foot in full lengths



ADS

8"	12"	18"
22254300	22254500	22254600
\$9.99	\$17.99	\$34.99

**DOWNSPOUT EXTENSION**

- Flexible extension can expand from 22" to 55"
- Flexible to direct downspout water as needed
- Choose from Green, White, or Brown

AMERIMAX



\$9.99

23430100  
23430200  
23430300

**SEPTIC EFFLUENT FILTER**

- Remove solids down to 1/16" and greatly extend the life of the septic system
- Slides into the baffle tee on the discharge side of the septic tank



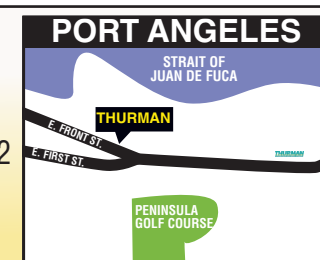
\$14.88

23951200



**THURMAN**  
KITCHEN · BATH · ELECTRICAL · PLUMBING  
WWW.THURMANSUPPLY.COM

1807 East Front St.  
Port Angeles, Washington 98362  
360.457.8591



**Our Policy:** Each of these items is required to be readily available for sale at or below the advertised price in all Thurman stores listed, except as specified in this ad. Some items in this ad may not reflect reduction from every day prices, but still represents an outstanding value to the customer. We reserve the right to correct typographical errors.